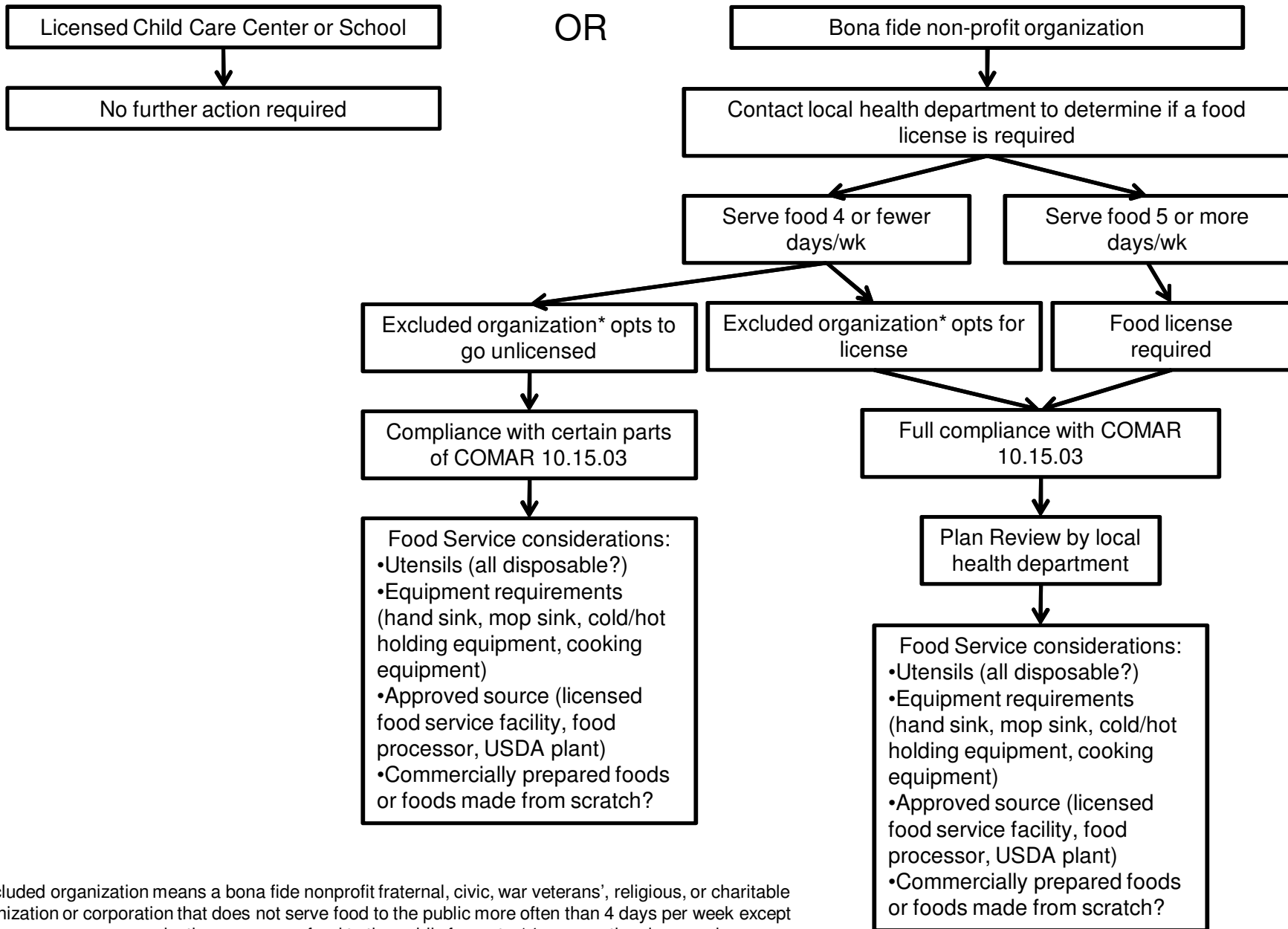


Provider /Local Health Department Decision Flow



* Excluded organization means a bona fide nonprofit fraternal, civic, war veterans', religious, or charitable organization or corporation that does not serve food to the public more often than 4 days per week except that once a year an organization may serve food to the public for up to 14 consecutive days; and a volunteer fire company that does not serve food to the public more often than 4 days per week except that once a year a volunteer fire company may serve food to the public for up to 30 consecutive days.